

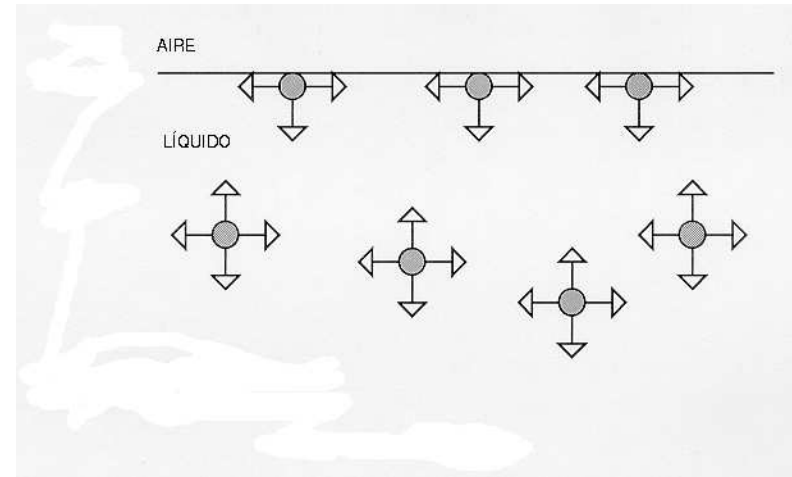
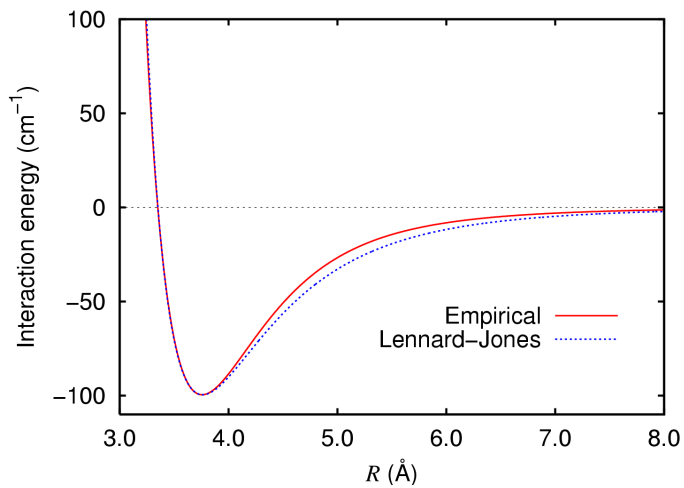
Tema VII.- Fenómenos de superficie

Esquema del tema

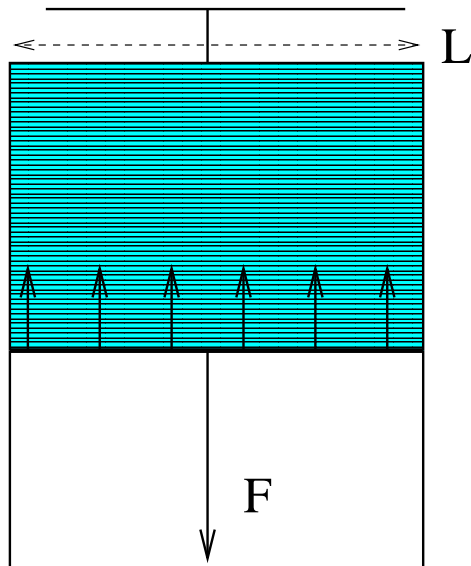
- **Lección 17 Tensión superficial y principales efectos**
Tensión superficial. Leyes de Laplace y Tate.
- **Lección 18 Capilaridad**
Ascenso y depresión en tubos capilares. Ley de Jurin.

Tensión superficial

Interacciones intermoleculares



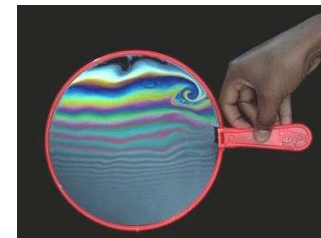
Tensión superficial



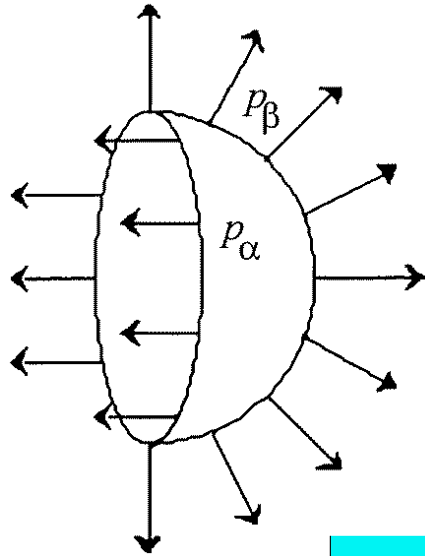
$$\sigma = \frac{F}{2L} \quad [\text{N/m, mN/m}]$$

$$\sigma = \frac{dW}{dS}$$

Líquido	σ (mN/m)	Líquido	σ (mN/m)
Agua (20°C)	72.8	Agua (60°C)	66.2
Aceite oliva	33.1	Etanol	22.3
Benceno	28.9	Mercurio	465

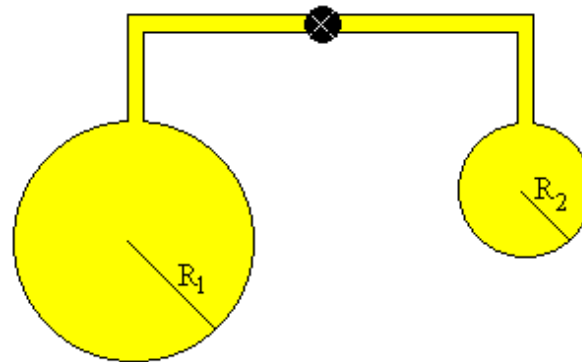
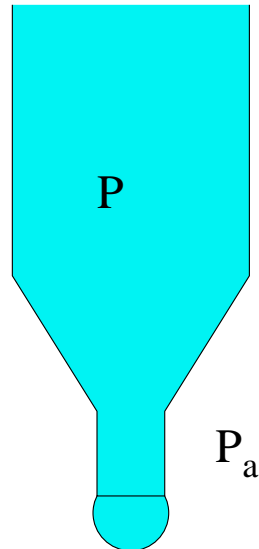


Ecuación de Young-Laplace

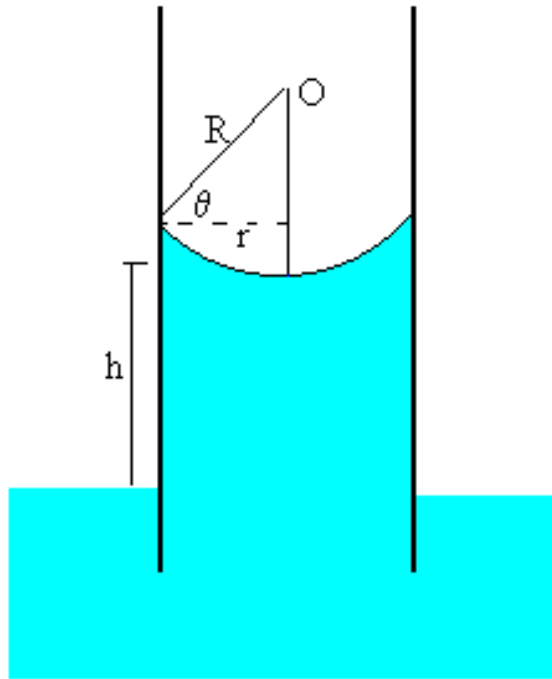
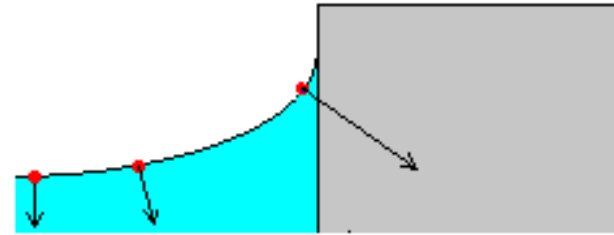
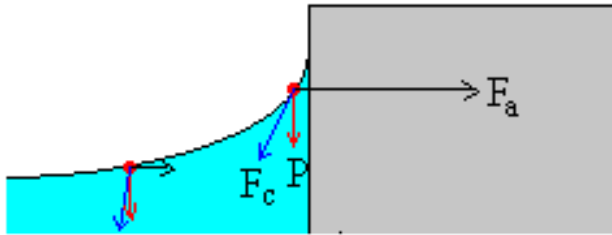


$$\Delta p = p_\alpha - p_\beta = \sigma \left(\frac{1}{R_1} + \frac{1}{R_2} \right) (*)$$

$$\Delta p = \frac{2\sigma}{R}$$



Capilaridad



Bibliografía

- F.W. Sears, M. W. Zemansky, H. D. Young y R. A. Freedman. Física Universitaria. Vol. I. Addison-Wesley Iberoamericana, 2004.
- J. Catalá. Física. Cometa (Zaragoza), 1985.
- Len Fisher, How to dunk a doughnut, Phoenix, 2002.
- W. Bürger. Tensiones superficiales, *Investigación y Ciencia*, marzo 2002.
- J.M. Courty y E. Kierlik. Castillos de arena húmeda, *Investigación y Ciencia*, agosto 2005.
- (**) J. Pellicer *et al.*, *Am. J. Phys.* 63 542 (1995).
- J. Pellicer *et al.*, *Phys. Educ.* 35 126 (2000).
- D. Huang *et al.*, *Phys. Educ.* 40 566 (2005).
- J. Pellicer *et al.*, *Am. J. Phys.* 70 705 (2002).
- F.L. Román *et al.*, *Am. J. Phys.* 69 920 (2001).